

## Product technical sheet

# WORKOUT PRO 2356



14+



29,9 m<sup>2</sup>

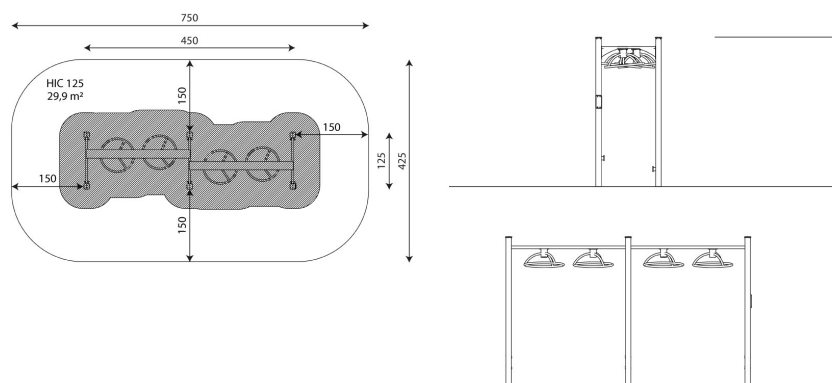
### Product data

|                             |                     |
|-----------------------------|---------------------|
| Length                      | 450 cm              |
| Width                       | 125 cm              |
| Total height                | 275 cm              |
| Age group                   | 14+ years           |
| Safety zone                 | 29,9 m <sup>2</sup> |
| Free fall height            | 125 cm              |
| In accordance with norm EN  | 16630:2015          |
| Availability of spare parts | YES                 |

Color options



Data is subject to change without prior notice.



**Vinci Group Sp. z o.o.**  
Seminaryjna 9 Street  
99-400 Łowicz

VAT: 534-250-14-46  
PHONE: +48 42 203 24 99 ext. 26  
M: +48 793 404 991

04/03/2025

**workout  
pro**

biuro@vinci-play.com  
info@vinci-play.com  
[www.vinci-play.com](http://www.vinci-play.com)

1 / 3

## Material specification



Powder galvanized and powder-coated or stainless steel construction of 100 x 100 mm profile, durable end caps on the top of the structure made of plastic,



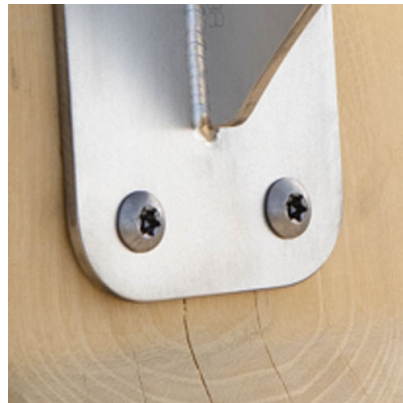
Aluminum exercise instructions plate screwed to HDPE plate, resistant to weather conditions,



Stainless steel bars with a diameter of 38 mm for a comfortable grip during exercises.



Moving elements based on bearings mechanism closed in casing, which do not require periodic greasing and maintenance, ensuring long service life of the device,



Stainless steel screws and/or screws covered with plastic caps,

## Additional information

- device intended for public outdoor gyms;
- equipment has a certificate issued by an accredited entity or a declaration of conformity;
- no sharp edges or chinks that would pose a danger of jamming the head, fingers or any other body parts;
- render is for reference only, the actual appearance of the equipment and its color may vary;

## Guarantee

**30**

30 year guarantee - Durability of steel and stainless steel structural elements

**15**

15 year guarantee - Durability of steel and stainless steel structures of mobile devices; durability of Robinia wood structural elements

**10**

10 year guarantee - Structural strength of HDPE, 100% recycled HDPE and HPL elements; structural elements made of 100% recycled material (composite)

**5**

5 year guarantee - Corrosion resistance of stainless steel and hot-dip galvanized and powder-coated steel elements, resistance to bark beetles and rotting of wooden structural elements

Detailed information in the guarantee card

**Vinci Group Sp. z o.o.**  
Seminarna 9 Street  
99-400 Łowicz

VAT: 534-250-14-46  
PHONE: +48 42 203 24 99 ext. 26  
M: +48 793 404 991

**workout**  
**pro**

biuro@vinci-play.com  
info@vinci-play.com  
[www.vinci-play.com](http://www.vinci-play.com)

## Amount of safe surface corresponding with free fall height:

HIC 125 29,9 m<sup>2</sup>

Data is subject to change without prior notice.

## Surfaces according to EN 16630:2015

|  | Description (mm)               | Layer thickness (cm) | Maximum fall height (cm) |
|--|--------------------------------|----------------------|--------------------------|
| Concrete / stone / bituminous surfaces (A, B, C) | -                              | -                    | ≤100                     |
| outer soil layer (A,B,C)                         | -                              | -                    | ≤120                     |
| Turf (A,B,C)                                     | -                              | -                    | ≤150                     |
| bark (A,C)                                       | Particle size from 20 to 80    | 30                   | ≤200                     |
|  |                                | 40                   | ≤300                     |
| wood shavings/cuttings (A, C)                    | Particle size from 5 to 30     | 30                   | ≤200                     |
|  |                                | 40                   | ≤300                     |
| sand (A,C)                                       | Particle size from 0,2 to 2 mm | 30                   | ≤200                     |
|  |                                | 40                   | ≤300                     |
| gravel (A,C)                                     | Particle size from 2 to 8      | 30                   | ≤200                     |
|  |                                | 40                   | ≤300                     |
| attested synthetic (A, B, C)                     | Tested according to EN 1177    |                      | 125                      |



**Vinci Group Sp. z o.o.**  
Seminaryjna 9 Street  
99-400 Łowicz

VAT: 534-250-14-46  
PHONE: +48 42 203 24 99 ext. 26  
M: +48 793 404 991

04/03/2025

**workout**  
**pro**

biuro@vinci-play.com  
info@vinci-play.com  
[www.vinci-play.com](http://www.vinci-play.com)

3 / 3