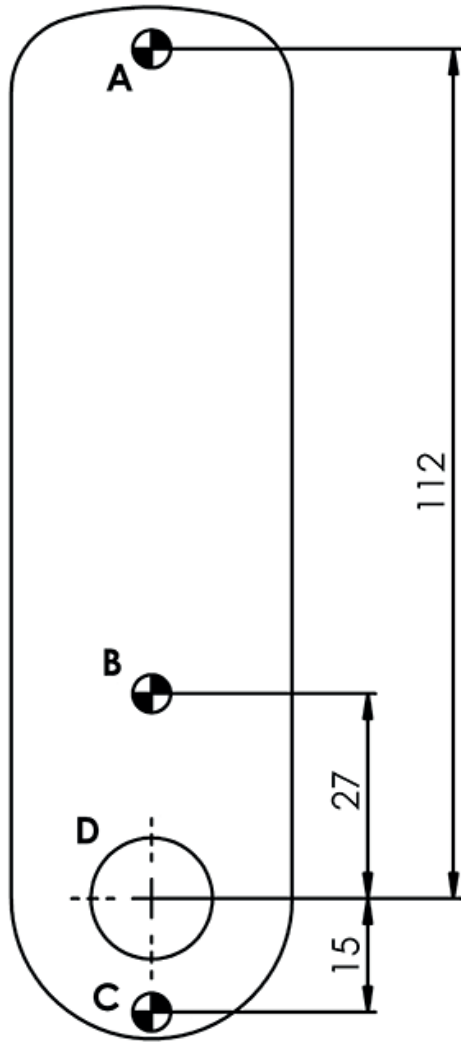


# Installation Template



Call Here

Please check that template is correct size before use – copies can be distorted

HOLES A, B & C DIAMETER 4.5 / 5.0mm  
HOLE D DIAMETER 16.0 / 16.5mm  
ALWAYS USE FIXING HOLE A  
USE EITHER OR BOTH OF HOLES B & C

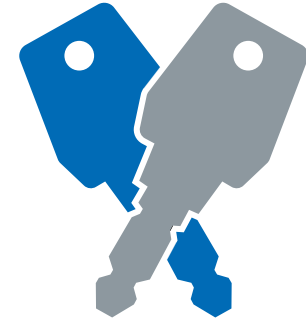
## IMPORTANT NOTE

Before drilling fixing holes, please ensure that the position of the Digital Combination Lock when fitted will allow clearance for the cam to function.

Lowe & Fletcher Ltd  
Moorcroft Drive  
Wednesbury, West Midlands  
WS10 7DE, England

T: + 44 (0) 121 505 0400  
F: + 44 (0) 121 505 0420  
E: [sales@lowe-and-fletcher.co.uk](mailto:sales@lowe-and-fletcher.co.uk)  
W: [www.lowe-and-fletcher.co.uk](http://www.lowe-and-fletcher.co.uk)

**L&F** A Lowe & Fletcher Group Company



## INSTALLATION INSTRUCTIONS

# 378- Surface Mounted Digital Combination Locks

378- Surface Keypad Fitting Instructions – 9224214 V1 May 2016

[lowe-and-fletcher.co.uk](http://lowe-and-fletcher.co.uk)

# INSTALLATION INSTRUCTIONS

## 378- Surface Mounted Digital Combination Locks

### FITTING INSTRUCTIONS

The Digital Combination Lock can be fitted to cupboards, cabinets and lockers etc as a direct replacement for existing cam locks or for the Lowe & Fletcher 3751 Digital Combination Lock. It can also be easily fitted to cupboards and cabinets that do not have an existing locking device.

### SPECIAL NOTES

Before installing the Digital Combination Lock, load the batteries and familiarise yourself with the operation and programming. Unless manufactured to special order, the lock is supplied in the "PRIVATE" operating mode. In this mode, the user must enter a four-digit User Code to open it. The unit will re-lock itself after four seconds. The lock can be opened at any time using the Master Code. Unless manufactured to special order, the default **Master Code is 11 33 55 77** and the default **User Code is 22 44**.

**These codes are common to all standard locks and it is very important that you set your own personal Master and User Codes. Your lock is not secure until you have changed the default Master Code and User Code. Keep a safe record of your master code as it is not possible to make any programming changes without it.**

Please see programming guide to set your own codes.

### INSTALLATION GUIDE - IMPORTANT NOTES

The 3780 lock can be fitted with two or three screws. Always use the screw position "A" behind the logo button. Use either of the other two positions "B" & "C" or both if preferred.

Before drilling fixing holes, please ensure that the position of the Digital Combination Lock when fitted will allow clearance for selected cam to work.

### ENSURE BATTERIES ARE CORRECTLY FITTED BEFORE FIXING LOCK

#### A) New Installation

**Step 1** Place template on door and mark TWO 4.5mm (3/16") holes (refer to installation diagrams). Use hole position "A" and either of positions "B" & "C". Mark ONE 16mm (5/8") hole (position "D").

**Step 2** Drill both fixing holes and the 16mm clearance hole.

**Step 3** Fit the Digital Combination Lock to the door by passing the spindle through the 16mm (5/8") hole.

**Step 4** Fit at least two fixing bolts to suit your door thickness.

**Step 5** Tighten the upper and lower bolt.

**Step 6** Select the cam which suits your door and frame and attach it to the square shaft at the end of the spindle using a M4 x 8mm screw and domed spring washer.

**Step 7** Now check the operation of the lock using the factory User Code 22 44.

**Step 8** If the lock is functioning correctly, CHANGE THE DEFAULT MASTER CODE 11 33 55 77 and DEFAULT USER CODE 22 44 and program the lock using the programming and operating instructions enclosed.

#### B) Replacing existing cam lock with the 378- Digital Combination Lock

**Step 1** Remove existing cam lock.

**Step 2** Place installation template on door over hole left by cam lock (position "D") and mark TWO 4.5mm (3/16") holes (refer to installation diagrams). Use hole position "A" and either of positions "B" & "C".

**Step 3** Drill the two 4.5mm (3/16") fixing holes.

**Step 4** Continue installation from step 3 to 8, above.

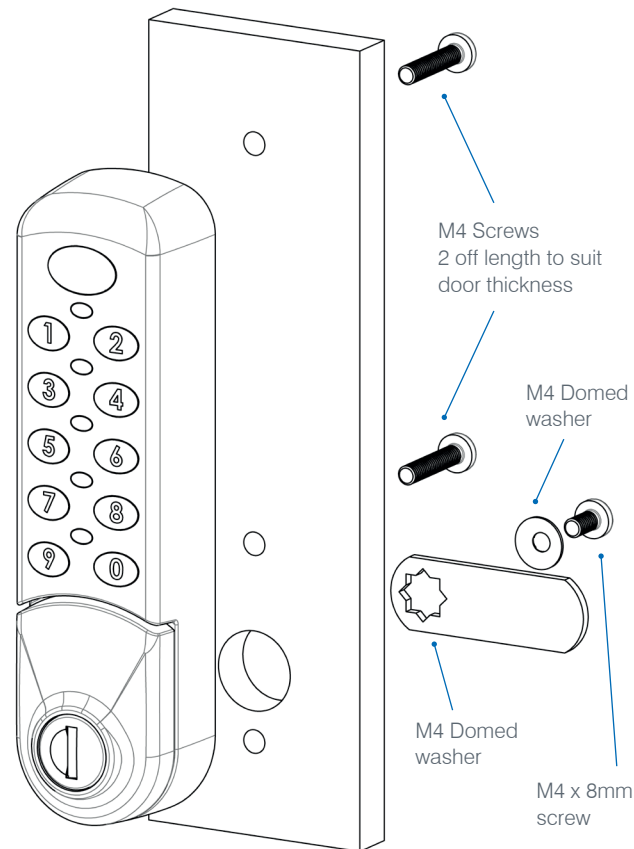
#### C) Replacing existing L&F 3751 Digital Combination Lock with the 378- Digital Combination Lock

**Step 1** Remove existing electronic lock.

**Step 2** Place installation template on door over the 16mm (5/8") hole left by digital lock in position "D" and the 4.5mm hole in position "A". Mark ONE additional 4.5mm (3/16") hole (refer to installation diagrams). Use either of positions "B" & "C".

**Step 3** Drill the 4.5mm (3/16") fixing hole.

**Step 4** Continue installation from step 3 to 8, above.



HOLES A, B & C DIAMETER 4.5 / 5.0mm  
HOLE D DIAMETER 16.0 / 16.5mm  
ALWAYS USE FIXING HOLE A  
USE EITHER OR BOTH OF HOLES B & C  
Recommended screw fixing torque 0.8Nm